

PROFESSIONAL SERVICES

DESIGN AND PROJECT MANAGEMENT

The design of each range or training complex begins with a Training Needs Analysis to understand the client's training requirements. This leads to the development of schematic and outline proposals.

Once the initial design is approved, we develop full and detailed construction drawings and provide equipment specifications to match training needs.

With a detailed design complete, the project can move to the tendering phase. Our project management team can generate tender documentation, provide contract supervision and assist with the assessment of potential suppliers and contractors.



Construction and Specialist Fit-Out

Our team of professional project managers and subject matter experts bring a wealth of experience and knowledge to manage the construction and fit-out of each range or training complex.

Having completed a large number of ranges in many countries around the globe, we have the experience to manage projects of all sizes; from small range refurbishments to the construction of major Police and Military training camps.

Our project managers can supervise construction of the building infrastructure works, and co-ordinate the installation of lighting, ventilation, bullet protection and other range-related systems. Review and export of training performance.

Range Operations

Our team of specialist technicians can assist in setting up training scenarios, managing day-to-day operations, and assess your ongoing maintenance needs.



Top right, Our in-house designers can quickly manage design revisions

Range Maintenance

Cubic Range Design Solutions (CRDS) provides comprehensive range maintenance services for all types of ranges. From small 25m ranges to large urban training areas, we have the expertise to operate, deploy and maintain all kinds of targetry and rangerelated equipment.

Regular comprehensive maintenance ensures that equipment runs smoothly and range utilisation is maximised. We can supply spare parts and perform repairs on most types of targetry for infantry, armour and aircraft training ranges.

Range Cleaning and De-leading

Our range cleaning and de-leading works feature a dedicated, well-trained and

experienced team of RCD operatives. They can provide:

- Range cleaning and disposal of lead and ammunition debris
- Regular range and de-leading works on bullet traps
- Regular cleaning and de-leading on all range systems
- Deep cleaning of all systems at regular intervals
- Cleaning of anti-ricochet surfaces
- Regular debris removal including toxic waste disposal



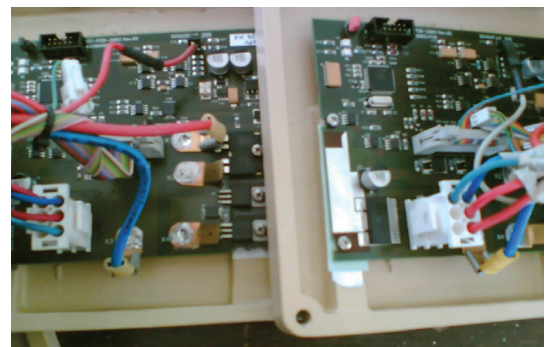
De-leading and dust removal



Replacing HEPA filters



Range cleaning



Repairing electronic targetry systems