



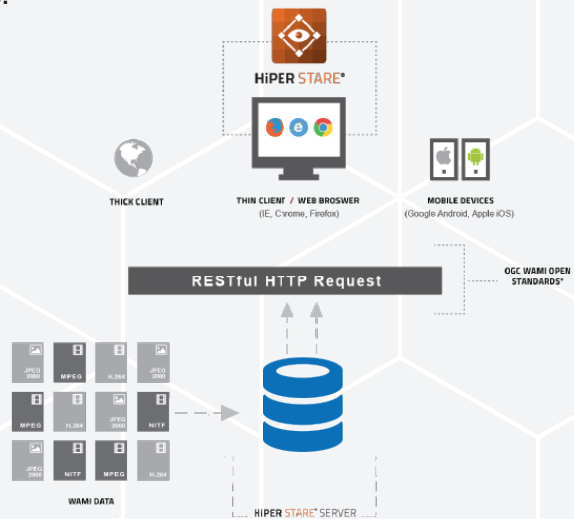
Features

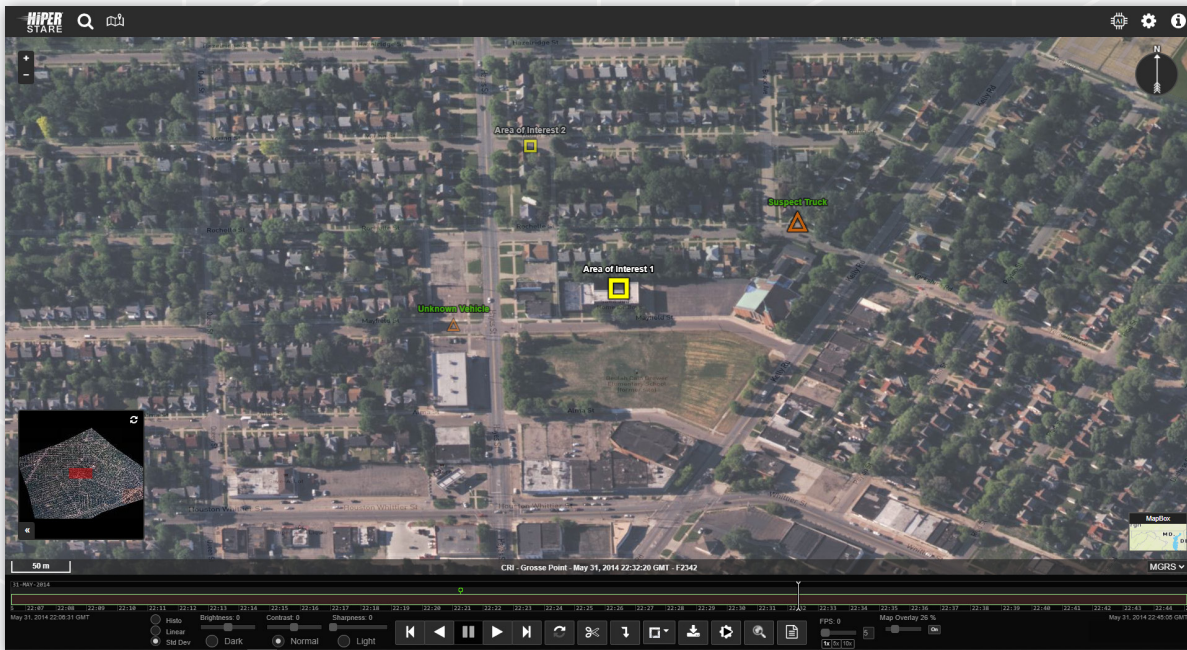
- Scale to tens of petabytes of WAMI data
- Enable remote users to experience high frame rate playback
- Retrieve and transmit only relevant data from disk storage to application or analytic
- Catalog and organize millions of raw data files into single mission sets
- Improve data transfer from aircraft to groundstation
- Serve data via OGC standard interface as frames or video streams
- Access and visualize WAMI content in a thin-client browser
- Maintain consistent storage I/O speed regard less of number of requests
- Optimized playback of archival formats like MIE4NITF without altering source data

HiPER STARE®

Access Wide Area Motion Imagery (WAMI) at unprecedented speeds even over minimal bandwidth.

HiPER STARE® is a data access solution used to catalog, organize and share large volumes of Wide Area Motion Imagery (WAMI) data within a services-oriented architecture. HiPER STARE provides applications and analytics access to WAMI data via RESTful HTTP web services.





MAKE ENORMOUS VOLUMES OF WAMI DATA ACCESSIBLE



CATALOG AND ORGANIZE MILLIONS OF RAW DATA FILES INTO SINGLE MISSION SETS



ENABLE REAL-TIME DATA ACCESS REGARDLESS OF DATA STORAGE LOCATION

Advanced Systems For Your Data

HiPER STARE® is the premier solution for Wide Area Motion Imagery (WAMI) data. This solution was designed to work with the most advanced Terrestrial and Spaceborne Intelligence, Surveillance and Reconnaissance (ISR) systems and provides support for a wide variety of WAMI electro-optical (EO) and infrared (IR) sensors.

A Powerful Engine for Optimizing AI/ML Workflows

HiPER STARE's advanced engine for rapid data access is essential for feeding large amounts of WAMI data to AI/ML algorithms quickly and efficiently. Our WAMI capabilities normalize disparate sensor data and have been integrated with a number of advanced analytic capabilities designed to reduce the timeline between collection and analysis.