



CUBIC DIGITAL INTELLIGENCE

DELIVERING DECISIVE MISSION EFFECTS AND COMMUNICATIONS ACROSS MULTI-DOMAIN ENVIRONMENTS, ANYWHERE IN THE WORLD.



SCAN ME

About

Cubic Digital Intelligence

Cubic Digital Intelligence (CDI) delivers the information advantage with a modular open data architecture approach that provides unmatched shared situational awareness for Operational Commanders across all domains at the tactical, operational, and strategic levels. Our highly agile capabilities deliver a real-time situational overview of the intelligence and operational environment to support decision making at every echelon.

Data-Driven Decisions



Unmatched PED Capabilities



Delivery of GEOINT & Foundation Imagery at the Edge



Scalable FMV Management & Dissemination



Rapid Video Enhancement



Wide Area Motion Imagery

Cubic Digital Intelligence Delivers Information to the Warfighter

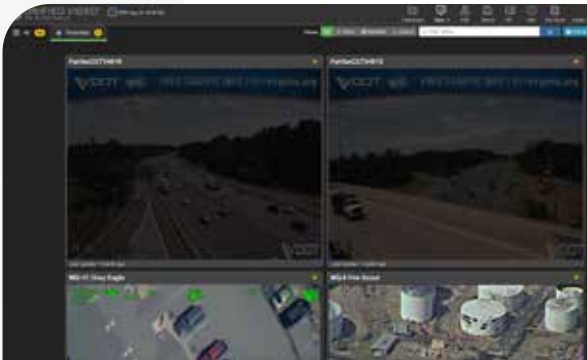


Strike Suite Ecosystem



Fully Immersive FMV

Fully immersive FMV PED exploitation solution. ANUBIS merges full frame real-time video and geospatial data into one wholistic geospatial environment.



Simple and Secure FMV Management

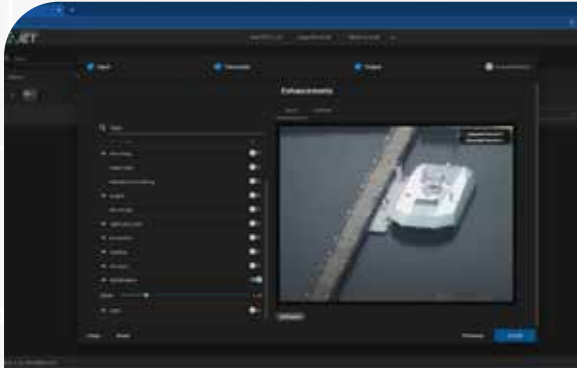
Provides a secure video management solution that makes viewing, managing, and understanding large amounts of real-time or archived video, simple.



3rd Party Software

A display-agnostic Tactical Data Link host software application, capable of combining disparate TDL networks by translating incompatible protocols and waveforms.





Video Encoding, Transcoding and Enhancement

Low latency video encoding and transcoding software which provides enterprise wide video enhancement capabilities.



Fast and Efficient Access to the Data You Need

HiPER LOOK is a high performance geospatial server for cataloging, organizing, and sharing large volumes of map, imagery, and terrain data.



3rd Party Software

ICE delivers the ability to communicate using IP while integrated into existing radio systems using encrypted channels in a secure and scalable way.

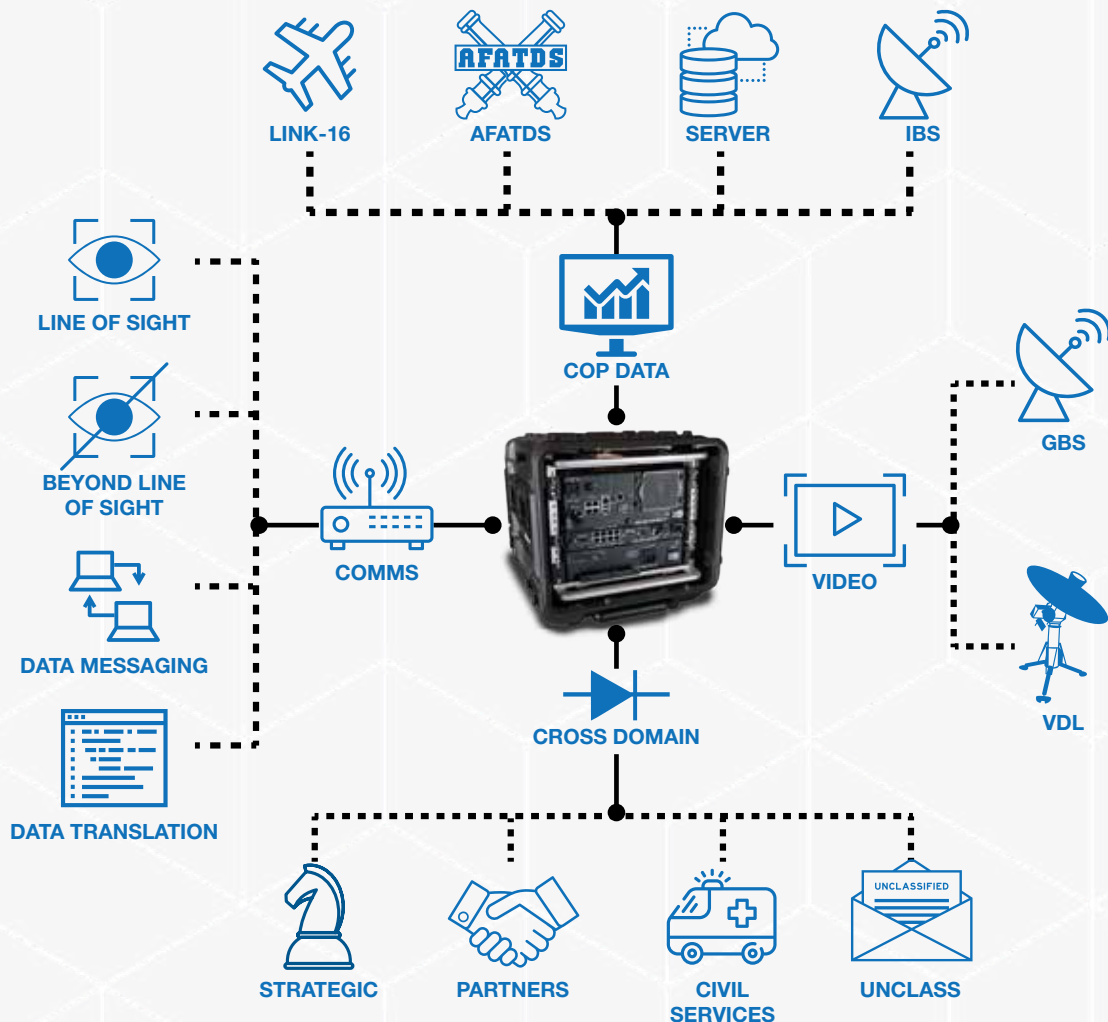


Deliver decisive and effective fire support from any platform, anywhere in the world.

Cubic Digital Intelligence Strike Suite ensures combat commanders have uninterrupted access to real-time intelligence independent of larger data networks to store and deliver information. It is a communication agnostic platform which interfaces to TDL, CDL, SATCOM and Tactical Radio systems.

Cubic Digital Intelligence Strike Suite is an integrated and flexible software defined C5ISR solution that enables joint fires and effects, remote targeting and enhanced situational awareness by fusing multi-domain battlefield data.

Capability Connectivity



Cubic Digital Intelligence Strike Suite

M3-SE FAMILY

The M3-SE is an enterprise-class compute and networking platform that delivers powerful modular Intel processing, Cisco networking, and large capacity storage to the tactical edge.



POWERFUL COMPUTE

The M3-SE-VSVR5-P high-powered computer platform with 16 physical cores and up to 128 GB of RAM is designed to support multiple virtual machines in a single small form factor module.

AI AND MACHINE LEARNING READY

Powered by dual NVIDIA GPUs, the M3-SE GPU module delivers class-leading performance in a low power, compact, and easily transportable solution.

POWER SUPPLY

The M3-SE-PA-P provides seamless, reliable battery power backup in the event of external DC power loss.

24 PORT CISCO SWITCH

The M3-SE-SW24G is a small form factor stackable switch module that provides an unmatched 100 watts of POE power to support Power over Ethernet (POE) capability.

CROSS DOMAIN SOLUTIONS

Cubic XD offers a full range of Raise-The-Bar (RTB) compliant, Unclassified to Top Secret cross domain solutions.

Want to learn more?
Scan this QR code for a video on the
CDI Strike Suite





Cubic Digital Intelligence
44645 Guilford Drive, Suite 201
Ashburn, Virginia 20147
United States.

CDISales@cubic.com
cubic.com

Cubic Digital Intelligence provides secure, full-motion video and geospatial solutions that transform your intelligence ecosystem. By unifying data, enhancing intelligence and accelerating decisions, we deliver capability advantages from the edge to the enterprise.