

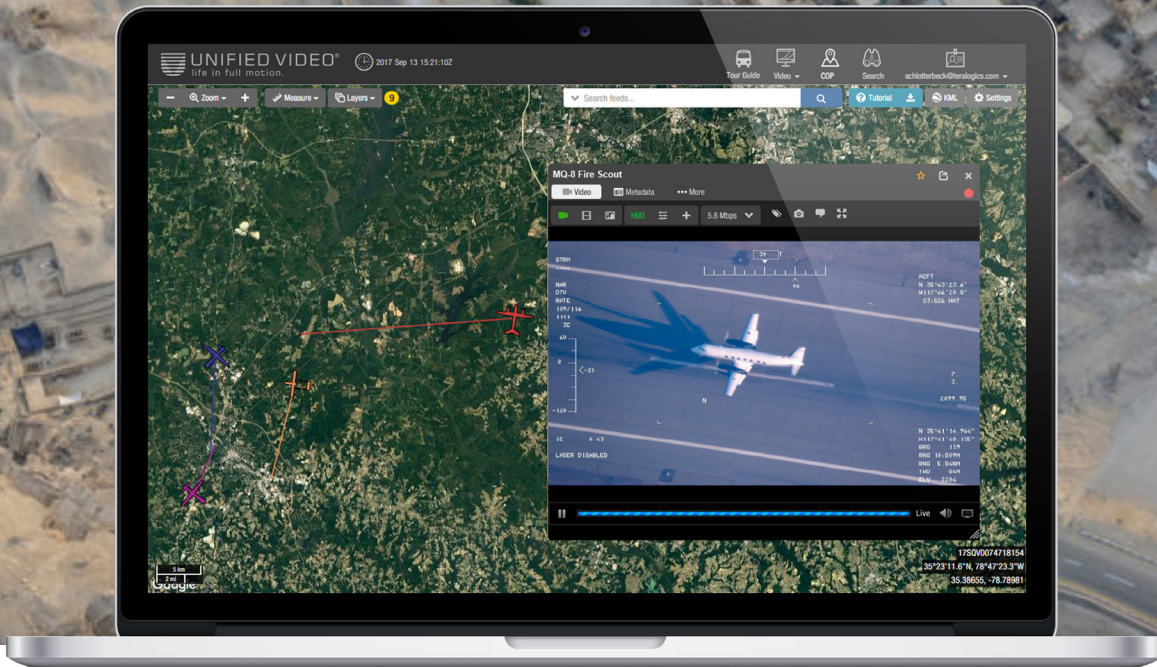


CUBIC™

Mission Solutions



TeraLogics



UNIFIED VIDEO®

Scalable full-motion video management solutions for centrally managed installations.

With Unified Video® at its core, Cubic | TeraLogics solutions power metadata-rich FMV processing, storage, and dissemination in real-time from anywhere in the world. With its suite of robust tools, intelligence analysts can find, scrub, view, annotate and tag imagery, and add metadata to FMV in real-time across the enterprise.

Unified Video connects to any video and/or metadata source to collect, index, record, and broadcast mission critical insights for rapid analysis. Both the user portal and network share the same asynchronous technology, the system can easily scale to support thousands of concurrent videos and users around the globe.

With integrated real-time video management, viewing, and collaboration tools, the Unified Video web application natively aggregates local and external sensors for a comprehensive view of full-motion video assets. With advanced processing, Unified Video allows users to view mission critical from widely distributed sensors on one common operating picture (COP).

KEY FEATURES

SECURE

Secured to US Department of Defense Standards

PROVEN

Trusted by 24+ Government Agencies

ADAPTABLE

Compatible with existing and emerging technologies

SCALABLE

Grows to meet the demands of your mission



Real-time video management solutions for any environment. Anywhere. Anytime.

TACTICAL



Video management for tactical users in austere environments.

ENTERPRISE



Video management for centrally managed mid-to large-scale installations

MOBILE



Video management for single and multi-site applications in demanding environments

UNIFIED VIDEO CAPABILITIES



VIDEO EXPLOITATION

- TRANSCODING

Enables encoding/transcoding features necessary to convert compression formats.

- INDEXING & STORAGE

Real-time indexing and storage of FMV and metadata retrieval.

- ANNOTATION

Enables the association of vector or text-based annotations (tags) to real-time or archived media.

- GEOSPATIAL DATA

Create custom map overlays and user tags to add context and make content searchable.

- MULTI-LAYERED MAPS

Generate custom map layers for user situational awareness to share critical data across the network.



WORKFLOW & COLLABORATION

- STREAM

Access live and archived video feeds from any sensor on any device.

- GEO-FENCING

Generate custom virtual boundaries.

- REAL-TIME CHAT

Communicate with other viewers and search chat logs for critical mission insight.

- MULTICAST

Send data across a computer network to several users at the same time.